

BAHAMA[®]

One



Design by
STUDIO F·A·PORSCHE

Bahama

Founded in 1950 today Bahama designs and manufactures a great variety of high-quality large-size parasols and sun sails. National and international customers alike trust in our industrial technology and accurate workmanship. The premium products from Bahama characteristically stand for technical attributes like compactness, durability and wind stability but also for aesthetical features like beautiful designs and materials.

»Made in Germany« – our full range production facility manufactures nearly all parts in house. Bahama further processes sustainable and environmentally friendly materials. The combination of high-quality materials and the structural features allows Bahama to guarantee wind stability for its products, depending on the model, of up to 130 km/h.

And most importantly: We love customer service – from consulting to installation, from cleaning to winter storage and maintenance.

Make the outdoors the new indoors. No matter what the weather. Just get to know us!

Studio F. A. Porsche

Design must be honest

„Design must be honest“ – these four words spoken by our founder, Ferdinand Alexander Porsche, get to the heart of our thinking. They mean that design is not simply decoration or superficial beautification to us, but rather the perfect symbiosis of form and function. This can only be achieved once you have fully grasped the functionality of a product.

When the studio was founded in Zell am See in 1972, F. A. Porsche already gave the evidence for this philosophy: the design of the Porsche 911. It's an unembellished, timeless design, which embodies the technical essence of the sports car like a perfectly tailored suit. A passionate tribute to motion – even standing still.

Our fascination with purist design still motivates us today. It permeates all the areas in which Studio F. A. Porsche designs objects for the 21st century: in product design, transport and space design.

Awards

With hundreds of international design prizes in our portfolio, today we are one of the leading studios worldwide in product, transport and room design.





BAHAMA[®]
One







„One“ — The Heart of it All

The epitome of luxury and elegance – Bahama One. The exquisite craftsmanship redefines the concepts of outdoor comfort and style. Meticulously designed and crafted to refine your outdoor experience, our high-class parasol is a statement of elegance and timeless beauty. Its unique aesthetics and versatility, which can be combined with various styles, makes it a perfect addition to gardens, terraces, and pool areas. This luxurious sunshade takes your outdoor area to a new, even more sublime level. Bestow upon your outdoor space the elegance it deserves and craft an environment that leaves your neighbors envious.

- ✿ Outstanding design and manufacturing quality "Made in Germany."
- ✿ Up to 111-months wind warranty depending on installation option and parasol size of up to wind force 10 | 102 km/h
- ✿ Leave the parasol open worry-free - even in your absence.
- ✿ Comes with In-Ground Tipping Base as part of the standard package
- ✿ Round and square models
- ✿ No loose functional parts like ropes, cranks or connectors
- ✿ Lighting with LED RGBW strips (optional) and electrical components hidden in the frame
- ✿ Unique light spot at the top of the umbrella (optional)
- ✿ Exceptional design through concealed mechanics and electrical components
- ✿ Maintenance-free servo mechanism for trouble-free opening and closing
- ✿ Two handles with spring buckles
- ✿ Standard frame in anthracite grey | RAL 7016, textured finish
- ✿ A spoke-integrated textile membrane for a flawless and consistently elevated surface tension
- ✿ Extensive selection of curated membrane colors
- ✿ Excellent UV-protection UPF 50+
- ✿ Various installation devices and adaptations for assorted requirements
- ✿ Six different model sizes from 13 m² to 25 m² and side lengths from 4 m to 5 m
- ✿ High waterproofness
- ✿ Short delivery times, fast spare parts delivery, exceptionally long spare parts supply
- ✿ Integrated theft prevention
- ✿ Special sizes available upon request

First Time
High-Class Cooperation in Sunshading

Made in Germany

Textile Membrane: swela "elegance"



In order to meet the highest standards of quality, protection and longevity, we have chosen the "elegance" fabric for the Bahama One – a material made under the Swela brand. The textile is made of high-density fabric which is not only waterproof but also provides an impressive UV resistance. These properties not only ensure optimal performance during rain showers but also provide effective shielding against UV radiation. This guarantees your personal comfort and also preserves the color vibrancy and durability of the umbrella fabric.

- * High tear resistance
- * Distinctive surface feel
- * 100% polyester fabric with dirt and water repelling impregnation
- * Grammage of approx. 310 g/m²
- * Excellent UV-protection UPF 50+ protects against UV radiation
- * Highest degree of fabric lightfastness (i.e. fading) (DIN EN ISO 105-B02 | Class ≥ 7–8)
- * High waterproofness, pressure resistance (EN 20811, ISO 811 | Water column ≥ 35 m bar, 350 mm)
- * Weather fastness (DIN EN ISO 105-B04 | Class ≥ 7–8)
- * Excellent friction resistance (DIN EN ISO 105-x12 | Class ≥ 4–5)





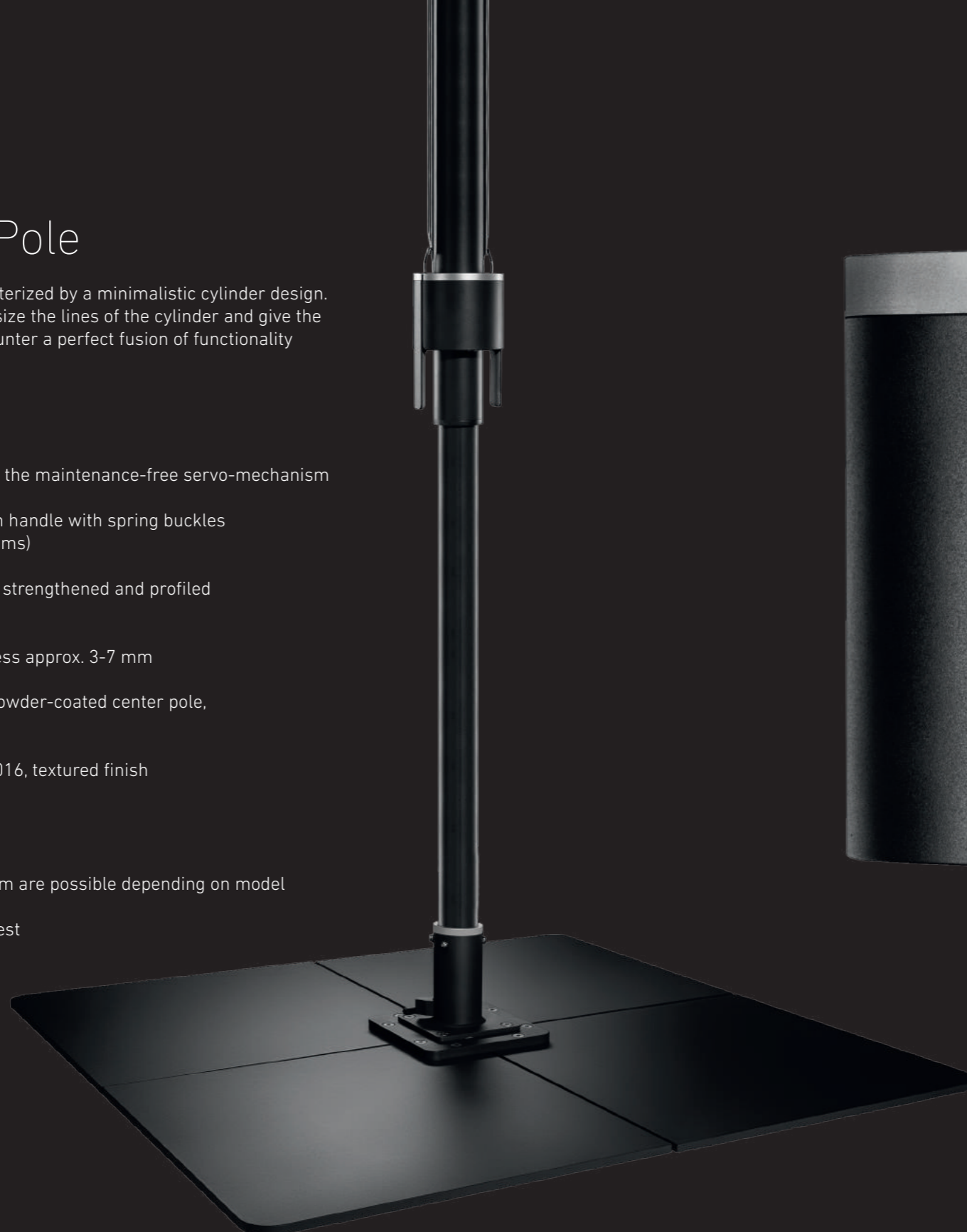
Umbrella Center Pole

The center pole of the Bahama One is characterized by a minimalistic cylinder design. Accents in a brushed aluminum look emphasize the lines of the cylinder and give the entire parasol its appealing aesthetics. Encounter a perfect fusion of functionality and aesthetics.

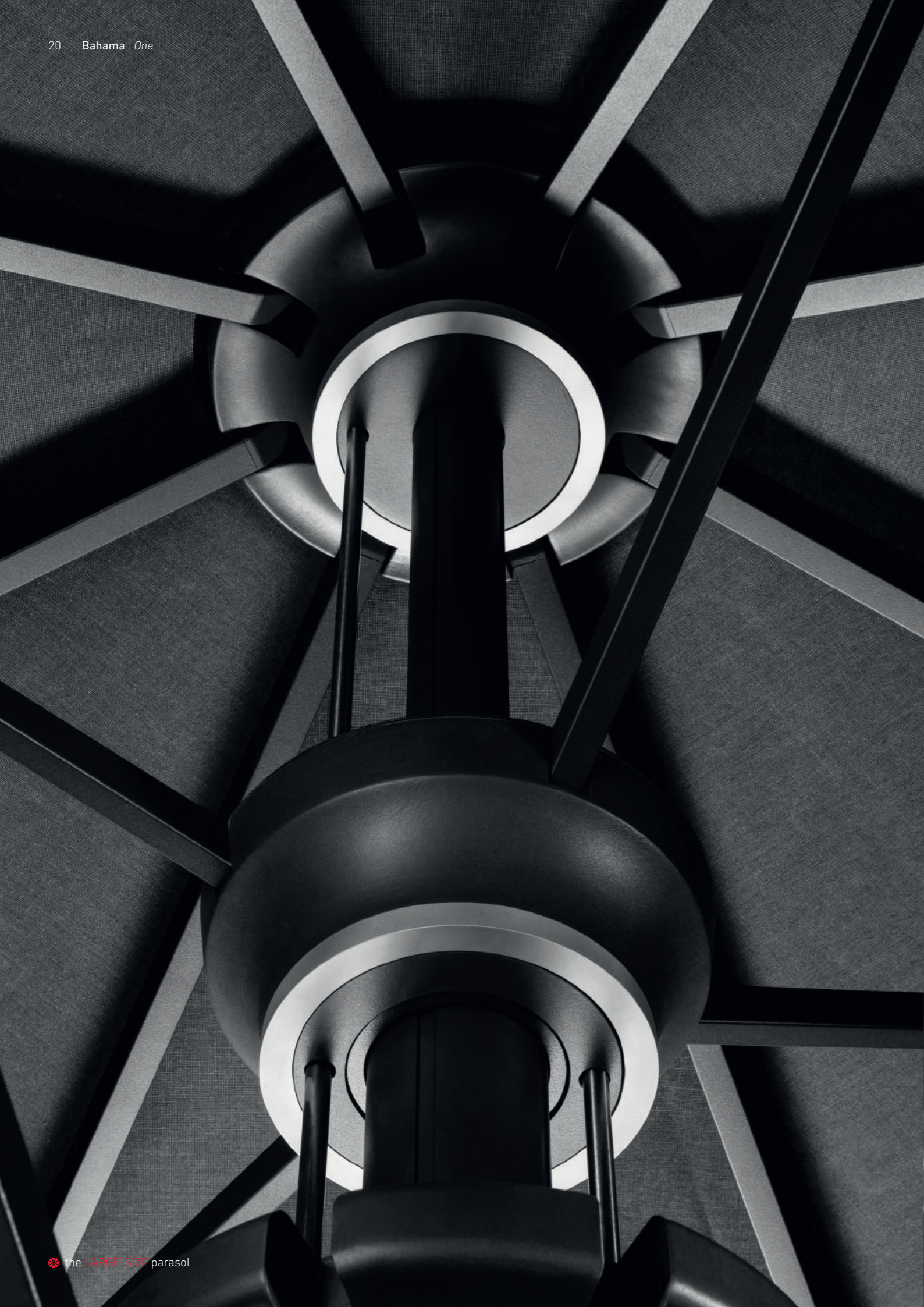
- ✿ Center pole with inner and outer pole
- ✿ Easy and quick opening and closing due to the maintenance-free servo-mechanism
- ✿ Effortless operation facilitated by a tension handle with spring buckles (as opposed to cranks or similar mechanisms)
- ✿ Extra stability through extruded, internally strengthened and profiled aluminum center pole
- ✿ Pole diameter approx. 82 mm, wall thickness approx. 3-7 mm
- ✿ Impact and scratch resistant due to PES powder-coated center pole, post-baked
- ✿ Standard frame in anthracite grey | RAL 7016, textured finish

OPTIONAL

- ✿ Umbrella center pole extension, up to 50 cm are possible depending on model
- ✿ Umbrella center pole reduction upon request
- ✿ Special colors available upon request



In-Depth Product Development of the Two
Leading Specialists in Quality and Design



Spokes, Bearings and Hinges

The spokes and support spokes of the Bahama One are not only functional but also aesthetic. Made from high-quality recycled aluminum, they are designed with no visible wiring or fasteners disrupting the appearance. The shaping is simple and elegant, complementing a modern and sophisticated look.

- ✿ All supporting components made of aluminum or stainless steel
- ✿ Rectangular and hollow extruded aluminum profile
- ✿ Mounted using stainless steel axle bolts and spring pins
- ✿ With hollow seam for spoke membrane integration
- ✿ Individually exchangeable spokes and support spokes
- ✿ Screws and other fasteners covered with panels



LED Lighting

Experience a fascinating atmosphere with the optional LED lighting integrated into the parasol's support spokes. All electrical components and cables are hidden within the umbrella frame. Moreover, the Bahama One introduces an additional design accent with its distinctive light spot at the top of the umbrella, creating an extra highlight.

- ❁ No visible attachments or cables; integrated into support spokes
- ❁ Creates a cozy atmosphere and enhances the lighting conditions
- ❁ Upper light spot only possible in combination with LED Lighting option

LED specifications

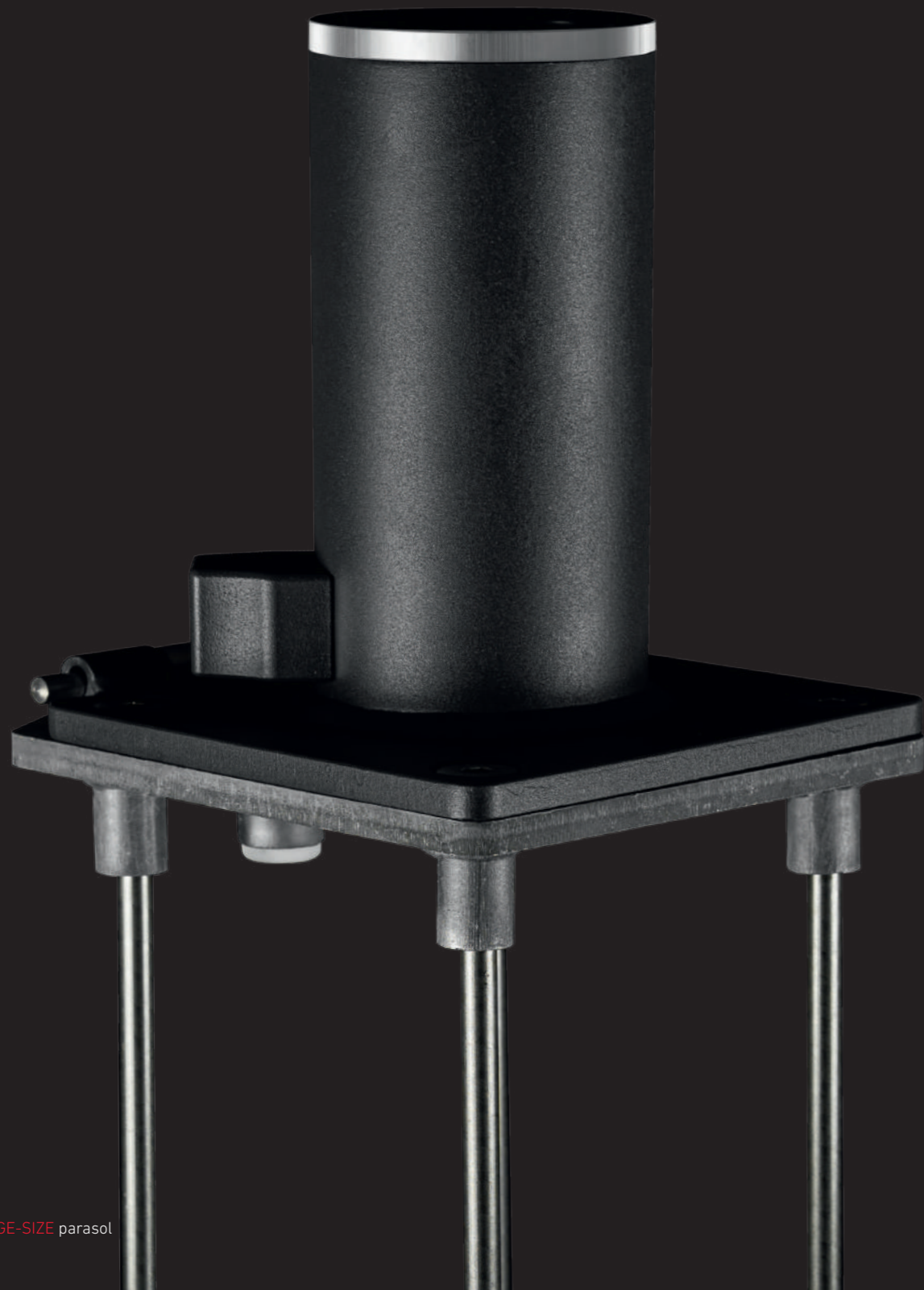
- ❁ RGBW-LED strips and LED light spot
- ❁ Indirect RGBW-LED lighting 120-240/24V
- ❁ Dimmable with remote control
- ❁ Color settings freely selectable by remote control and app (when using the APP a sufficient Wifi range must be ensured; suitable Wifi equipment is available from us), colors including warm white, cold white and neutral





Installation Options

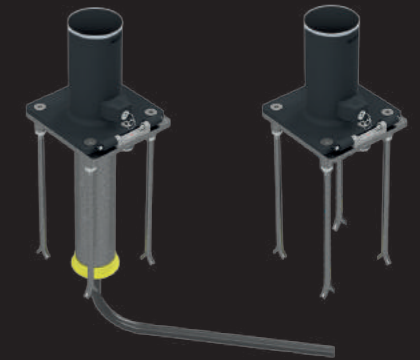
The standard package comprises the In-Ground Tipping Base. All installation options are galvanized and powder-coated in anthracite grey | RAL 7016, textured finish. Select the installation option that best suits your needs and ensure a stable base for your parasol.



In-Ground Tipping Base

Our in-ground tipping base is not only functional but also aesthetically designed. The elegant design seamlessly fits into any outdoor ambience and underlines the exclusive character of your umbrella. The in-ground tipping base is included in the standard supply scope of the Bahama One and guarantees a wind warranty up to max. wind force 10 | 102 km/h, depending on the parasol size.

- ✿ Included in the standard supply scope
- ✿ Lower part to be set in concrete
- ✿ Powder-coating of the above-ground connecting components in the RAL color of the parasol frame
- ✿ Screw-on connecting components with tilting hinge
- ✿ Weight: approx. 4.8 kg
- ✿ For parasols with/without electro-mechanical features



Unique High-Performance Guarantee:
Sole Manufacturer with specific Warranty
up to Wind Force 10 | 102 km/h

Steel Plate Base with 4 or 8 steel plates | 2 layers

With the combination of outstanding stability and aesthetic sophistication, our steel plate base defines new standards. Made of high-quality galvanized steel, it not only guarantees reliable stability but also convinces through a robust and weather-resistant coating to keep your investment functional and maintain its flawless appearance in the long term. The timeless design of the steel plate base seamlessly fits into any environment and gives your high-class parasol an impressive visibility. Take advantage of the freedom to place your parasol wherever you please with the steel plate base while maintaining a harmonious look.

- ✿ Flat plates, with a height of only 15 mm or 30 mm; no tripping edge
- ✿ Screw-on connecting components with tilting hinge
- ✿ Powder-coated in RAL 7016 anthracite grey, textured matte finish
- ✿ Plate size: 490 × 490 × 15 mm (ea. 28 kg)
or 740 × 740 × 15 mm (ea. 65.2 kg)

✿ Sizes of the Steel Plate Bases

for ø 4 ø 4.5 4 × 4	2 layers, 8 plates, 490 × 490 × 15 mm, approx. 240 kg
for ø 5 4.5 × 4.5	1 layer, 4 plates, 740 × 740 × 15 mm, approx. 290 kg
for 5 × 5	2 layers, 8 plates, 740 × 740 × 15 mm, approx. 550 kg



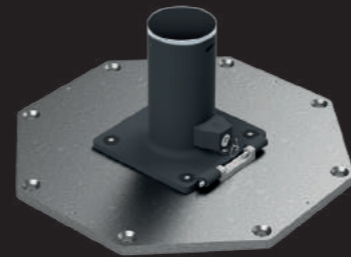
Made in **Germany**

Octagonal Surface Mount with Counter-Bores

- ✿ Weight: approx. 18 kg
- ✿ Powder-coating in RAL color of the parasol frame
- ✿ Screw-on connecting components with tilting hinge
- ✿ Especially suited for bolting onto massive concrete surface

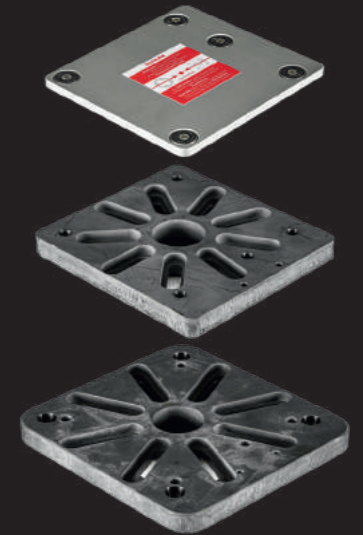
Optional

- ✿ »fischer« heavy-duty anchoring bolts (1 set = 8 pcs.); type #FH II 15/15 SK A4; M10 thread; incl. concrete drill type #SDS Plus II, drill depth 105 mm and Allen wrench SW 6



Multi-use Flange Plate | for 3 or 4 screws

- ✿ Dimensions for 3 screws: 208,5 x 194 x 20 mm
- ✿ Dimensions for 4 screws: 238,5 x 224 x 20 mm
- ✿ Weight: approx. 9.7 kg (includes the winter cover)
- ✿ Galvanized multi-use flange plate | adaptation for In-Ground Tipping Base
- ✿ For in-ground bases with 3 or 4 screws, with M10 or M12 screw connection
- ✿ Incl. winter cover
- ✿ Galvanized multi-use flange plate (20 mm) with stainless steel lid (3 mm)
- ✿ Connecting components not included in the supply scope



Connecting Plate for »Krinner« Ground Screw

- ✿ Suitable for »Krinner« KSF F 140x1600-M, no setting in concrete, screw-in foundation
- ✿ Galvanized steel
- ✿ Weight: approx. 6 kg
- ✿ For tiltable connecting components used for Tipping Base
- ✿ Height adjustable
- ✿ Incl. screws for fastening and leveling on Krinner Ground Screw
- ✿ With cover plate

Optional

- ✿ Connecting components not included in the supply scope





Theft and Usage Protection

- ✿ Lock (included with delivery) incorporated in the installation option



Transport Packaging

The parasols leave our production facility in perfect condition. To ensure their arrival in an impeccable state they are delivered in a hard-cardboard cylinder tube.

- ✿ Outer diameter: approx. 410 to 462 mm*
- ✿ Cylinder length: approx. 3,950 to 4,930 mm*
- ✿ Weight without parasol: approx. 20-30 kg*

*depending on model

Protective Cover

The available protective cover is exclusively manufactured for the Bahama One and made of swela "elegance" fabric, the same material used for the umbrella membrane. This ensures that your parasol radiates equal elegance in closed and open condition. In addition, it makes sure that your parasol remains protected in every season.

- ✿ Robust weather protection cover
- ✿ Made of swela "elegance" in the same color as the membrane
- ✿ With zipper for telescopic rod
- ✿ Optional telescopic rod

Extra Protection V4A | Maritime Edition

To provide an extra protection for your Bahama One, the parasol is also available in a V4A stainless steel edition.

- ✿ All metal components made of a special alloy V4A stainless steel
- ✿ Developed for use near the seaside
- ✿ Especially durable



Handling

Opening, tensioning and closing is quick and easy

Opening

- ✿ Take off the safety strap
- ✿ Release the tension handle lock
- ✿ Lift both handles up
- ✿ Remove the optional unfold prevention device
- ✿ Lift the spoke ends until the parasol opens by itself
- ✿ Latch in the spring buckle and press the handle down

Closing

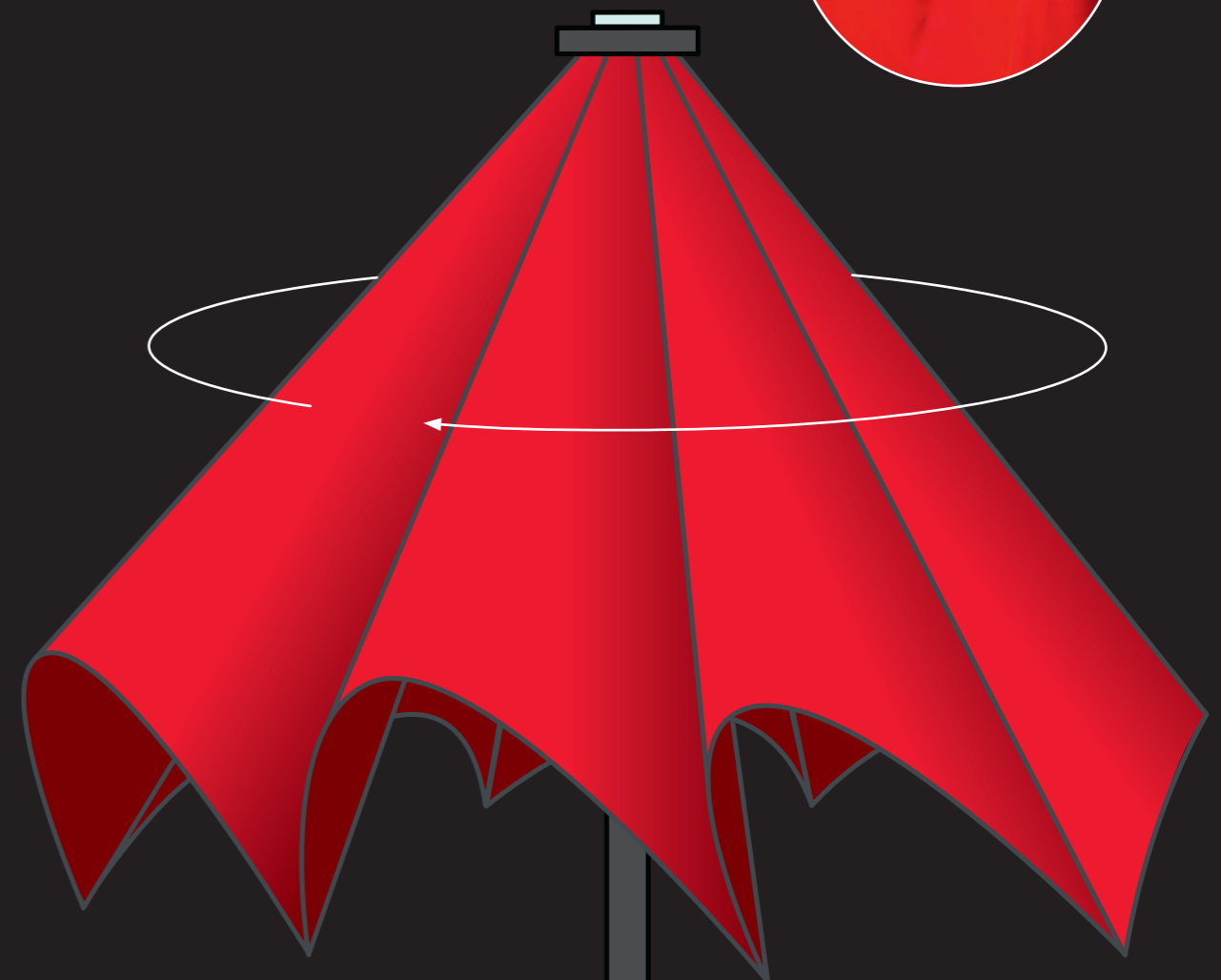
- ✿ Release the tension handle lock
- ✿ Lift the handles up and unlatch the spring buckles
- ✿ Close the umbrella (final position)
- ✿ Insert the optional unfold prevention device
- ✿ Press the handles down onto the pole (passive position)
- ✿ Pull the tips of the fabric to the outside of the closed parasol and spirally wrap them around the center pole
- ✿ Wrap the safety strap(s) around the parasol



Strap-Securing the Parasol

The excellent appearance and the technical features of the textile membrane can be maintained by adhering to the following closing procedures:

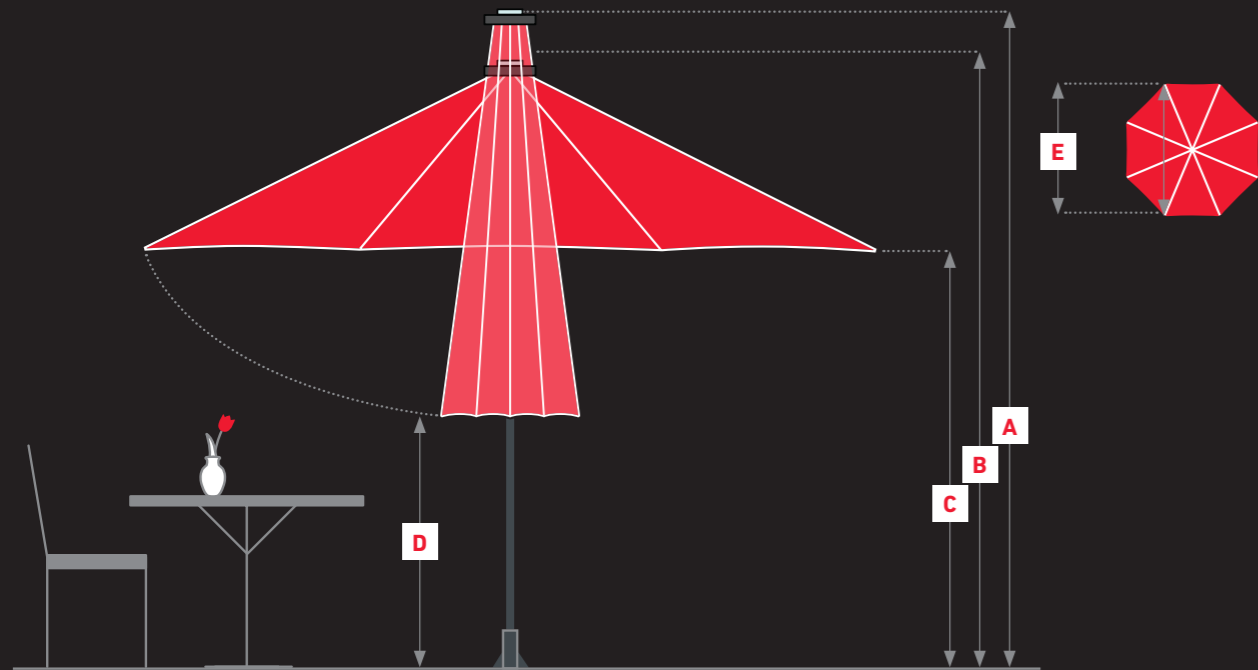
- ✿ Always pull the tips of the fabric to the outside of a closed parasol
- ✿ Do not store the parasol with any fabric stuck between the spokes and support spokes
- ✿ Spirally wrap the fabric around the center pole
- ✿ Wrap the safety strap around the parasol to secure the fabric
- ✿ Re-adjust safety strap(s) in case of longer closing times
- ✿ A protective cover is recommended



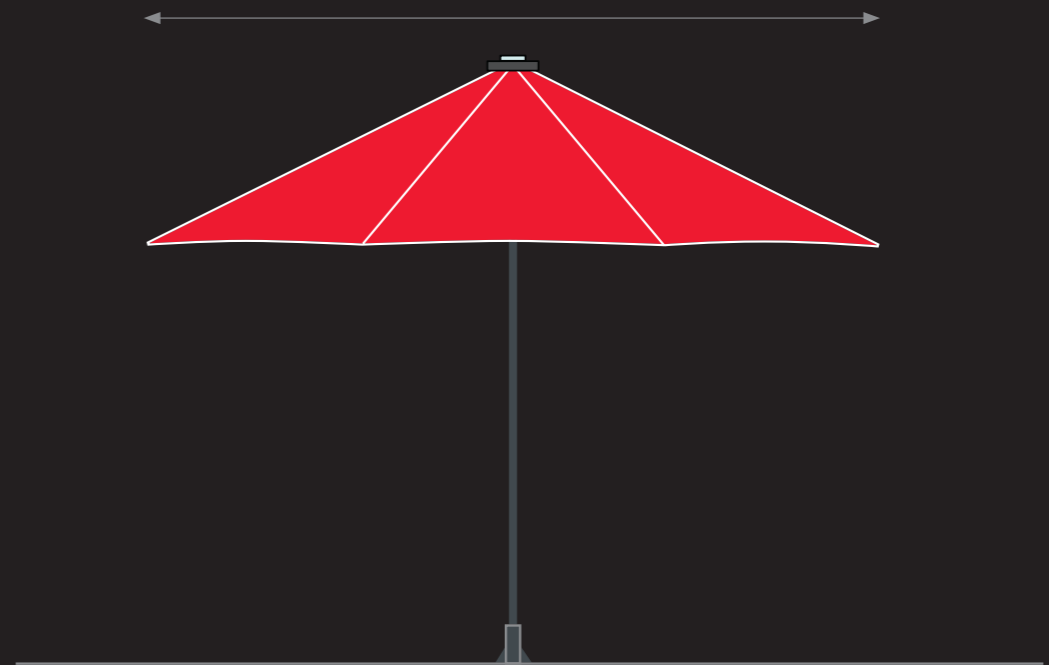


Dimensions & Technical Data




One






Smaller sizes such as 3.0 x 3.0 m / 3.5 x 3.5 m and Ø 3.0 m / Ø 3.5 m are available on request!



All measurements are approximate

	 Ø 4.0 m 8 Spokes	 Ø 4.5 m 8 Spokes	 Ø 5.0 m 8 Spokes
Area in m ²	13	16	20
Parasol weight without installation component & packaging, in kg	63	67	70
Transport weight incl. packaging, in kg	83	87	90
A Height closed* in cm	377	400	423
B Height opened* in cm	309	317	325
C Passage height* in cm	240	240	240
D Ground clearance* in cm	170	167	164
E Inside circle dia. in cm	370	416	462
Max. permitted wind velocities fully opened parasol, km/h Permanent/Mobile	102/71	95/71	88/66

All measurements are approximate

	 4.0 x 4.0 m 8 Spokes	 4.5 x 4.5 m 8 Spokes	 5.0 x 5.0 m 8 Spokes
Area in m ²	16	20	25
Parasol weight without installation component & packaging, in kg	68	72	77
Transport weight incl. packaging, in kg	88	92	97
A Height closed* in cm	391	418	444
B Height opened* in cm	309	317	325
C Passage height* in cm	240	240	240
D Ground clearance* in cm	104	95	84
Max. permitted wind velocities fully opened parasol, km/h Permanent/Mobile	88/66	74/56	60/44

* All measurements refer to the use with a permanent installation option (in-ground tipping base)



Good to know

Made in Germany

Bahama's customers always refer back to the great importance of our German production facilities. »Made in Germany« is still a unique selling point and a reason to buy. Bahama's full range production facility is located in Germany.

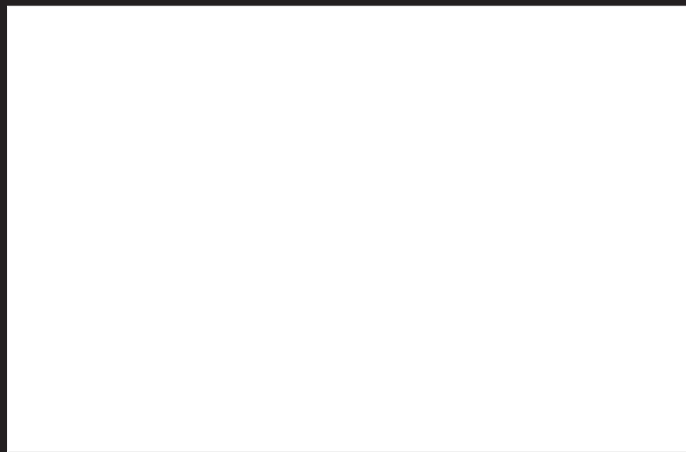
The combination of the highest quality materials and structural features allows Bahama to guarantee the wind stability of its products, depending on the model, up to 130 km/h. In addition to the technical details of the parasol, it is especially the lightfastness of the fabrics' colors, the waterproofness and grammage as well as the water column of the textile membranes which make Bahama top of its class. Trust is placed in Bahama by luxury hotels such as the Burj Al Arab in Dubai, the Hotel Sacher in Vienna and the Dalí Museum in St. Petersburg, USA.

Service

Service greatly influences the life span of a parasol. The exchangeable textile membrane of a Bahama parasol can – after being exposed to all sorts of weather conditions for years – be cleaned or replaced. Our service makes a full technical and general overhaul of the product so that they not only look attractive, but can defy the strongest of winds.

- ✿ No matter where you need Bahama's service, the Bahama team or one of our expert partners will be glad to help – worldwide.
- ✿ Careful and individual planning
- ✿ Installation of new parasols
- ✿ Fitting of new textile membranes
- ✿ Complete service i.e. assembling and disassembling the large-size parasols, washing, cleaning and maintenance of the frame and textile membranes
- ✿ Membrane service, i.e. fitting and removing the textile membrane, cleaning and repairing
- ✿ Storage of the returned and serviced large parasols and/or textile membranes
- ✿ Technical trainings





01/2024

BAHAMA®

Bahama GmbH | Gewerbeparkstr. 34 | D-51580 Reichshof | T +49 (0) 2265 998 0 | info@bahama.de

www.bahama.de